



Fibre Marking Laser System

# LASER

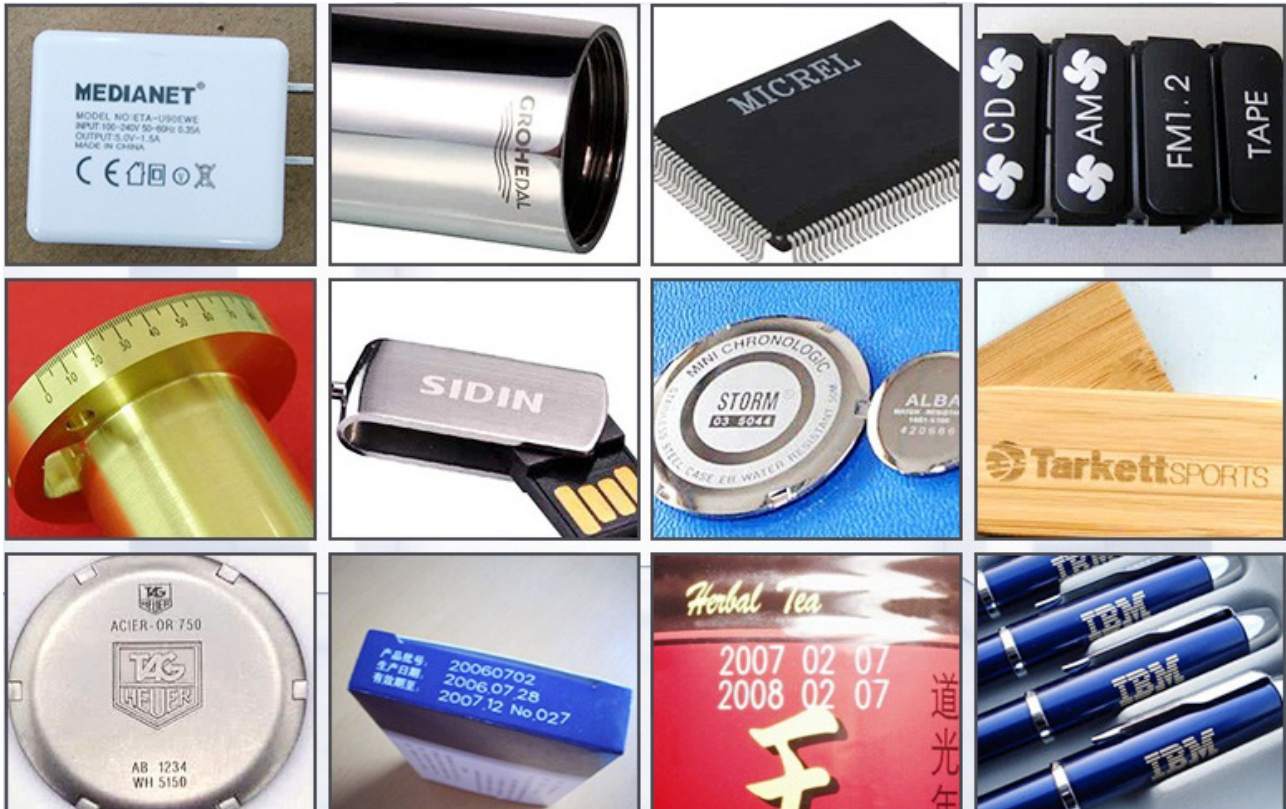


## A Marking Fibre Laser system built to Boxford specifications

Boxford Fibre marking lasers are ideal for a large variety of industrial marking applications on a variety of materials including steel, stainless steel, aluminium, carbide, copper, brass, titanium, plastics and ceramics.

### System features

- Fully enclosed for optimal safety and fume management.
- Suitable for metal and non-metal marking.
- High Accuracy and Speed with 100,000 hours laser source life.
- Bar Code, QR Code and serial number marking.



## Specifications

**BFM110**

Marking Area (mm)	110 x 110
(in)	4.3 x 4.3
Z Axis Travel (mm) - (manually adjusted)	300
Laser source power	20 Watts
Laser Type	Fibre 1064nm WL
Beam Quality	m2<2
Pulse Repetition Frequency	20-2KHz
Integrated Laser Cooling System	Air Cooled
Minimum Line Width	50µm
Minimum Character	0.3mm
Maximum Acceleration	0.5G
Machine Weight	90kg
Dimensions (W x D x H mm)	400 x 800 x 790
Mounting	Desktop
Safety	Class 1 closed configuration
Operating Modes	Scan Marking / Engraving
Location Precision(mm)	<0.01
Power Requirements	Machine - 220V 1ph @ 6A Extractor - 220V 1ph @ 5A

**Prices From (excl VAT)**

**£7,995**

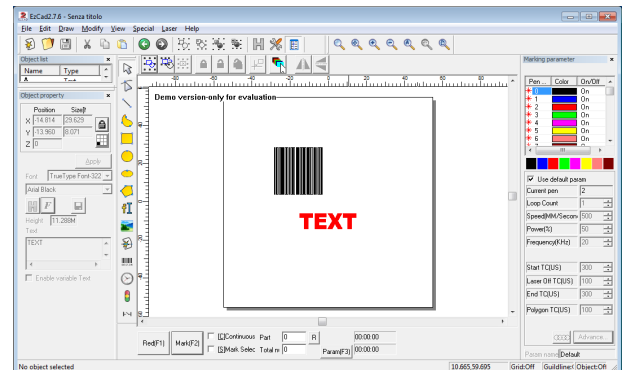
Fibre Marking Laser

# LASER

### Included Accessories

The Fibre Marking Laser system is packaged with the following accessories:-

- Windows Software & drivers. Design software supports PLT, BMP, JPG, PNG, TIP, PCX, TGA, ICO, DXF and other popular file formats.
- Operator cycle start foot operated switch.
- 1 days on-site UK mainland training.
- Warranty - 12 Months (excludes consumable items - extraction filters)



### Optional Accessories

- Automated tilting rotary device for engraving cylindrical objects.
- Automated foot switch operated guard.
- Filtered fume extraction/air filtration system\*

\* Laser systems can produce noxious fumes of varying levels depending on the material been processed. If exhausting internally, extraction must be to HEPA standards. Users may wish to consider a permanent external exhaust system, eliminating the need for continual filter replacement. Please ask for further details.



**Boxford**

Dewsbury Road,  
Elland,  
HX5 9BG

T: 01422 324810

F: 01422 372503

E: info@boxford.co.uk

W: www.boxford.co.uk