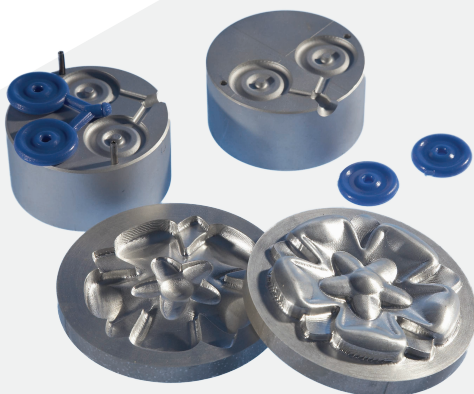
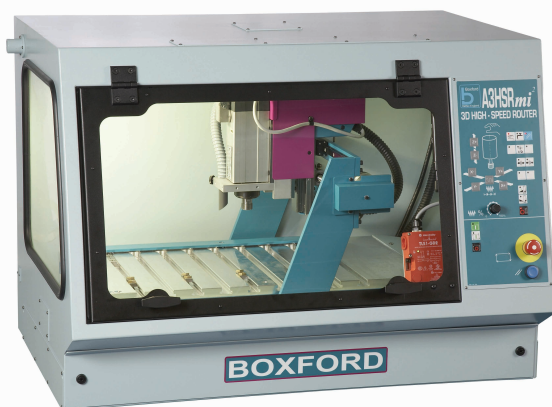


CNC Routers

The Boxford range of 3-axis CNC high performance routers are ideally suited to fulfil all levels of education and training requirements, as well as a host of design and commercial applications.

Manufactured in the UK, the rigid machine construction, incorporating high quality precision components, facilitates the use of high material removal strategies, giving a component throughput that lower quality machines of lighter construction cannot match.





A3HSRmi²

Bench top CNC routers suitable for machining hardwood, softwood, manufactured boards, plastics, other synthetic materials, aluminium alloys and brass.



A3HSRmi² EX

Extended capacity versions of the A3HSRi² and A3HSRmi² machines, offering 350mm extra machining area to accommodate a larger variety of work.

Standard features:

- USB interface
- Tooling starter pack
- Single seat of Boxford 'CAD/CAM Design Tools' software (incorporating Techsoft 'Mill Design' & import wizards for creating 2,3 and 4 axes machining routines from 2D and 3D CAD files, JPEG and BMP image files and Gerber PCB files)

Optional accessories:

- Removeable vacuum bed
- Manual rotary indexer
- Auto rotary indexer
- PCB floating head kit
- Lathe attachment
- Portable cabinet base
- Extraction manifold kit
- High performance extractor
- Standard extractor

| Specifications | A3HSRmi² | A3HSRmi² Ex | |
|-------------------------------|----------------------|------------------|-------|
| Axis travel | X (Longitudinal) | 575mm | 925mm |
| | Y (Cross) | 325mm | 325mm |
| | Z (Verticle) | 130mm | 130mm |
| Table area | 750x400mm | 1100x400mm | |
| Spindle motor | 1000 watts | 1000 watts | |
| Spindle speed | 8000 - 23,000rpm | 8000 - 23,000rpm | |
| Electrics | 110/220/240 V 1phase | | |
| Programmable feed | 5000mm/min | 5000mm/min | |
| Rapid feed rate at 100% | 5000mm/min | 5000mm/min | |
| 3D profiling up to | 8500mm/min | 8500mm/min | |
| Aluminium alloys/brass | YES | YES | |
| Machine weight | 150kg | 190kg | |
| Max dimensions (w x d x h mm) | 1050x750x740 | 1400x750x740 | |