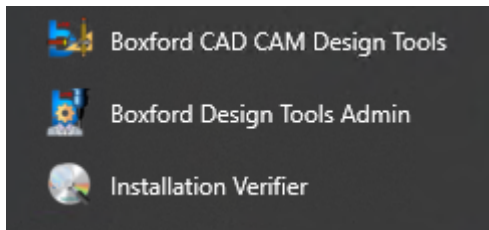




# Boxford Ltd

## CADCAM Design Tools Version 202 and above

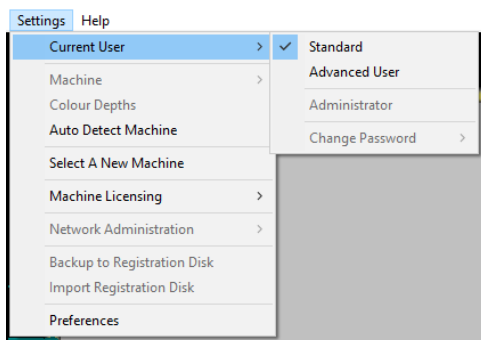
### Additional Windows 7, 8, 10 and 11 Installation Notes



There are now two application launchers, a normal user launcher and an administrator/teacher level user who needs to be able to make changes.

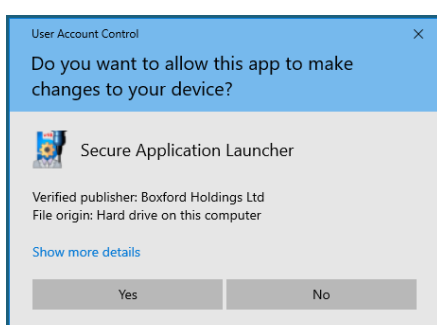
#### Boxford CAD CAM Design Tools Icon

“Boxford CAD CAM Design Tools” is the student version of the software and requires no admin rights; the icon has a pen/right angle protractor and compass. When the application is run in this mode, no changes to the application can be made. Attempts to enter User – Administration mode will result in a grayed out menu item.



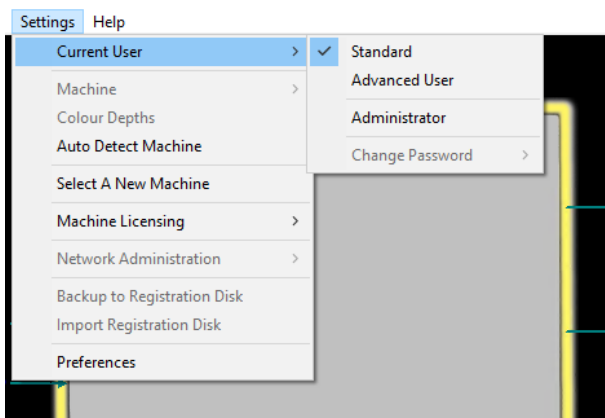
#### Boxford Design tools admin Icon

The “Boxford Design tools admin” shows a settings wheel and will display the UAC admin shield on some systems. The application attempts to launch with elevated system privileges. On selecting “Boxford Design tools admin” a windows UAC elevation is requested, depending on your UAC confirmation.



The only changes that are made to the system are files related to our application. The application is digitally signed to ensure that the user has confidence that the application has not been altered and is legitimate and virus free. On highly sophisticated anti-virus protection systems an exception may have to be created. This is purely because the application launches another application using advanced wrapping technology that expands and loads ActiveX component libraries in the background without having to register these ActiveX components and requiring multiple reboots. Some AV protection may see this as malicious as this is how some advanced viruses behave.

If you are a standard local user and the user account doesn't support Administration right Windows UAC will handle the interaction. This normally involves pop-up a credentials box "Windows needs your permission to continue" box, where the users can elevate the local user to an account with admin privileges for this one session. This is done purely to make system changes, and hence avoid the creation of Virtual stores for individual users on the local system.



Once started the user can enter and exit the User - Administrator mode.

**WARNING :** Windows 7, 8, 10 and 11 do not permit saving of any File within the Application Directory of a running application.

**PROBLEM :** If the Network Administrator has set the users default G&M folder, or CAD folder to ".\" which means current directory without altering the start in folder of the application, then the application is likely to fail when importing CAD files from TechSoft! As Windows will move the file in background and the application will not be able to track this file translocation.

While the Directory will pass the initial test to see if it's valid and exists, the system is unable to determine whether a file can be created in this location until a file is created in this location by user interaction. Even creating a temp file as a test will not determine whether this location is valid as Windows Serialisation will create the file, but automatically move the file.

**REASON:** The windows serialisation will result in a number of serious system failures as files will move inexplicably after being saved, and unable to be opened from the save location, even though the save location may appear valid to the user, and remain valid, the actual save path will be different to the one shown to the user, effectively creating ghost files.

To resolve this situation set the Default Folders to the users drive, or set it to <MYDOCS> or anywhere the user is permitted to save. On Windows 7, 8 and 10 this is generally only the Documents folder.

**NOTE:** <MYDOCS> is a special setting which will be changed for the My documents of the student at run time, if the network is running a standard Microsoft ZAK configuration.

**NOTE:** If you are running a RM/Novel configuration you may set the Volume Start-Up Directory to the users drive, this will redirect the .\ to this location, but it will not be immediately obvious from the file path whether the application is saving until a save event is actioned. So it is advisable to always use the Save Paths Dialog.